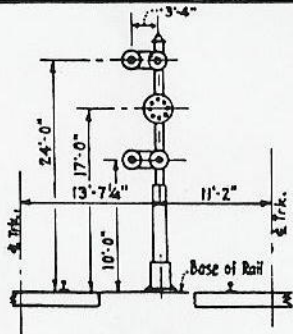
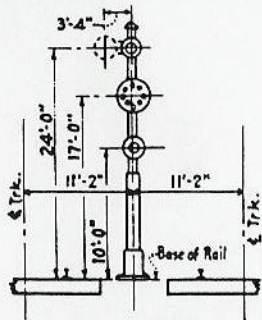


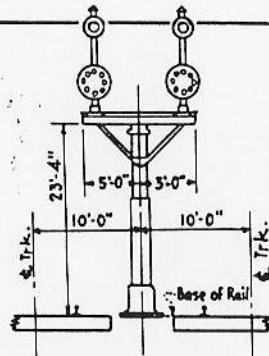
# SIGNALS



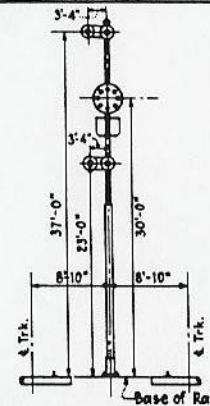
**CPL SIGNAL**  
With Top and Bottom  
Staggered Marker



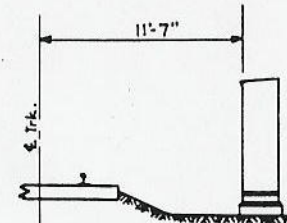
**CPL SIGNAL**  
With Top Staggered Marker  
25'-0" Mast



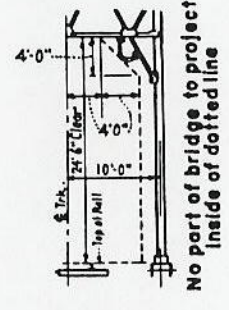
**BRACKET SIGNAL**



**CPL SIGNAL**  
With Top and Bottom  
Staggered Marker  
38'-0" Mast

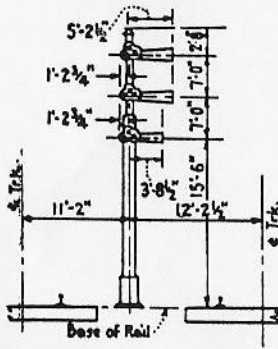


**RELAY CASE**

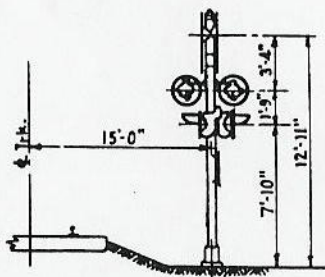


**STANDARD  
SIGNAL BRIDGE**

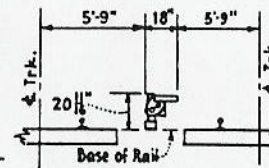
No part of bridge to project  
inside of dotted line



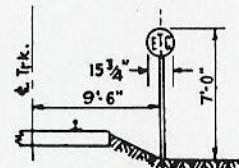
**SEMAPHORE SIGNAL**



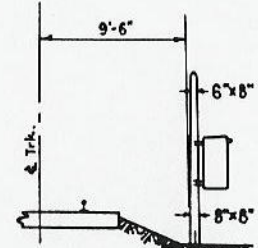
**FLASHING LIGHT SIGNAL**  
(6'-0" from edge of road paving)



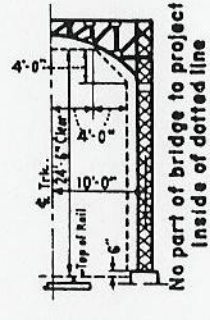
**MECH. DWARF SIGNAL**



**END TRACK CIRCUIT AND  
CUT SECTION SIGN**  
Outside Track



**CABLE POST**



**CANTILEVER  
SIGNAL BRIDGE**

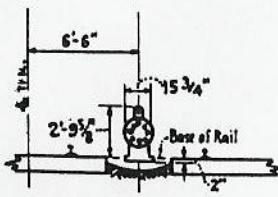
No part of bridge to project  
inside of dotted line

## BALTIMORE & OHIO RAILROAD STANDARD SIGNAL CLEARANCES

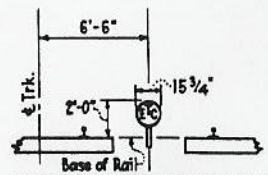
Office of Chief Engineer Comm. & Signals

Baltimore, Md.

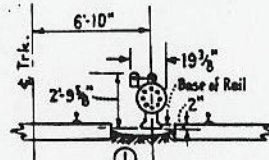
Mar. 5, 1954



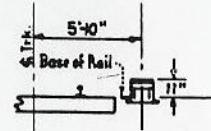
**CPL DWARF SIGNAL**



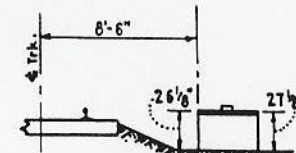
**END TRACK CIRCUIT AND  
CUT SECTION SIGN**  
Between Tracks



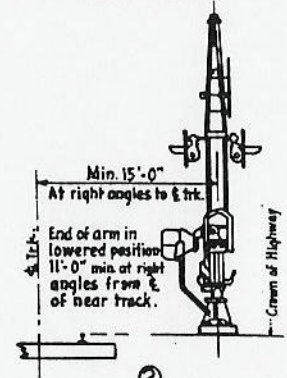
**CPL DWARF SIGNAL**  
With Staggered Marker



**SWITCH MACHINE**

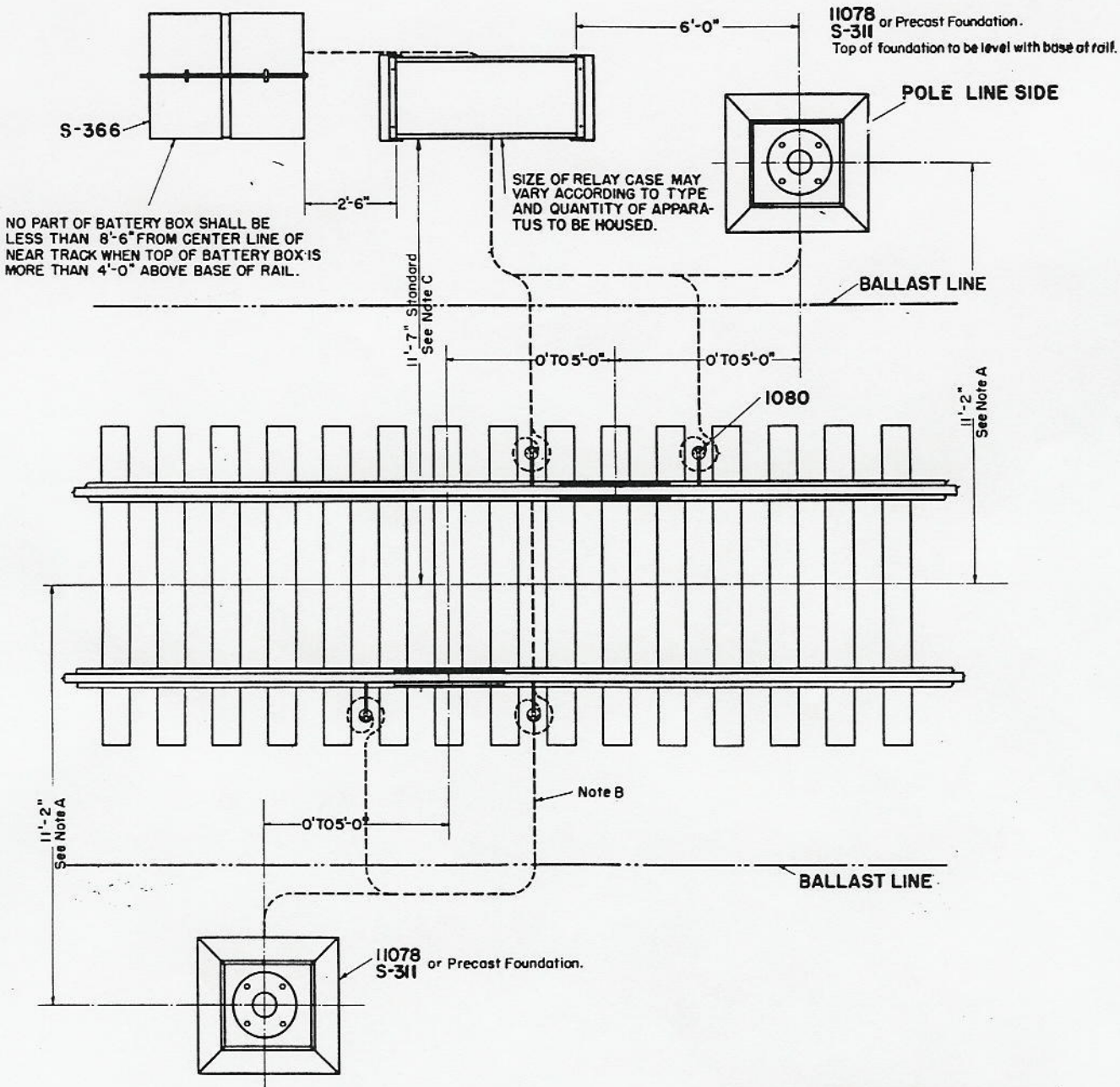


**BATTERY BOX**



**SHORT ARM GATES**

Clearance of Highway



**NOTE A:**

This distance may be modified where local conditions require, but shall be not less than 9'-6".

**NOTE B:**


Underground cables shall be installed in accordance with current instructions I-131.

**NOTE C:**

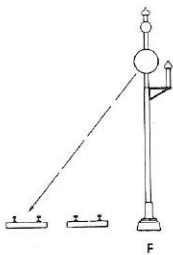
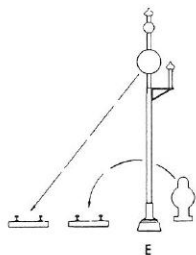
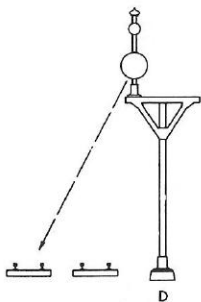
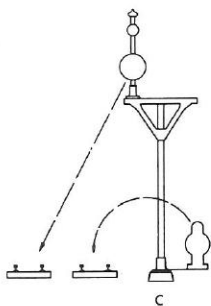
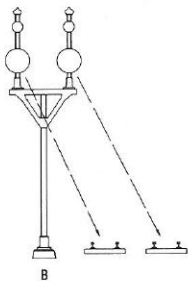
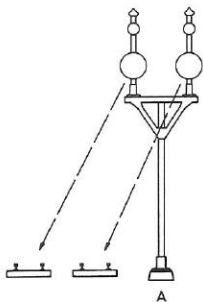
This distance may be increased where physical conditions prevent locating relay case as shown.

See Standard Clearance Plan No. S-1.

APPROVED:   
CHIEF ENG'R. MAINTENANCE

APPROVED:   
CHIEF ENG'R. COMM. & SIGS.

BALTIMORE & OHIO RAILROAD  
**SIGNAL LOCATIONS  
FOR SINGLE TRACK**  
OFFICE OF CHIEF ENGINEER COMM. & SIGNALS  
BALTIMORE, MD.  
MARCH 28, 1947



**TYPICAL BRACKET POST SIGNALS**  
**VARIATIONS FROM THESE ILLUSTRATIONS WILL BE**  
**USED UNDER SPECIAL CONDITIONS WHERE REQUIRED**