

22x34

NOTE 1- ASSEMBLE GASKETS (REF. 1 & 2) AS PER SPEC. "K-B".
 NOTE 3- GUIDE (REF. 10) TO BE ASSEMBLED AFTER RECEPTACLE UNIT (REF. 7) HAS BEEN ATTACHED LOCATE WALL OF RING (REF. 23) USING GUIDE TEMPLATE. NIVET AS SHOWN.
 NOTE 4- TEST PEN TSS-4368-003-BL.
 NOTE 5- SEE SHEET 4 FOR SCHEMATIC FRONT VIEW (FIG. 9) SHOWING COLOR LIGHTS NUMBERING SYSTEM.
 NOTE 6- LENS (REF. 5) IS USED IN TOP AND BOTTOM MARKER LIGHTS ONLY. WHERE CLEAR LENS 66901-006-00 IS CALLED FOR TO BE ASSEMBLED BETWEEN REF. 19 & 23.

NOTE 7- APPLY THREE BEADS OF SEALING COMPOUND PER "MORNING" AT EQUIDISTANT POINTS BETWEEN LENS (REF. 20) AND RING (REF. 23).
 NOTE 8- INSTALLATION OF MARKER LIGHTS IN FIELD REQUIRES A .875 DIAMETER HOLE IN CASE (REF. 1) OR IN BASE (REF. 3) FOR INSTALLING CONDUIT (REF. 62 & 71).
 NOTE 10- CHECK ROUTING ON REMOVAL OF ONE SIDE OF PLATE.

GRS GENERAL RAILWAY SIGNAL
 ROCHESTER NEW YORK

SHEET 1 OF 3

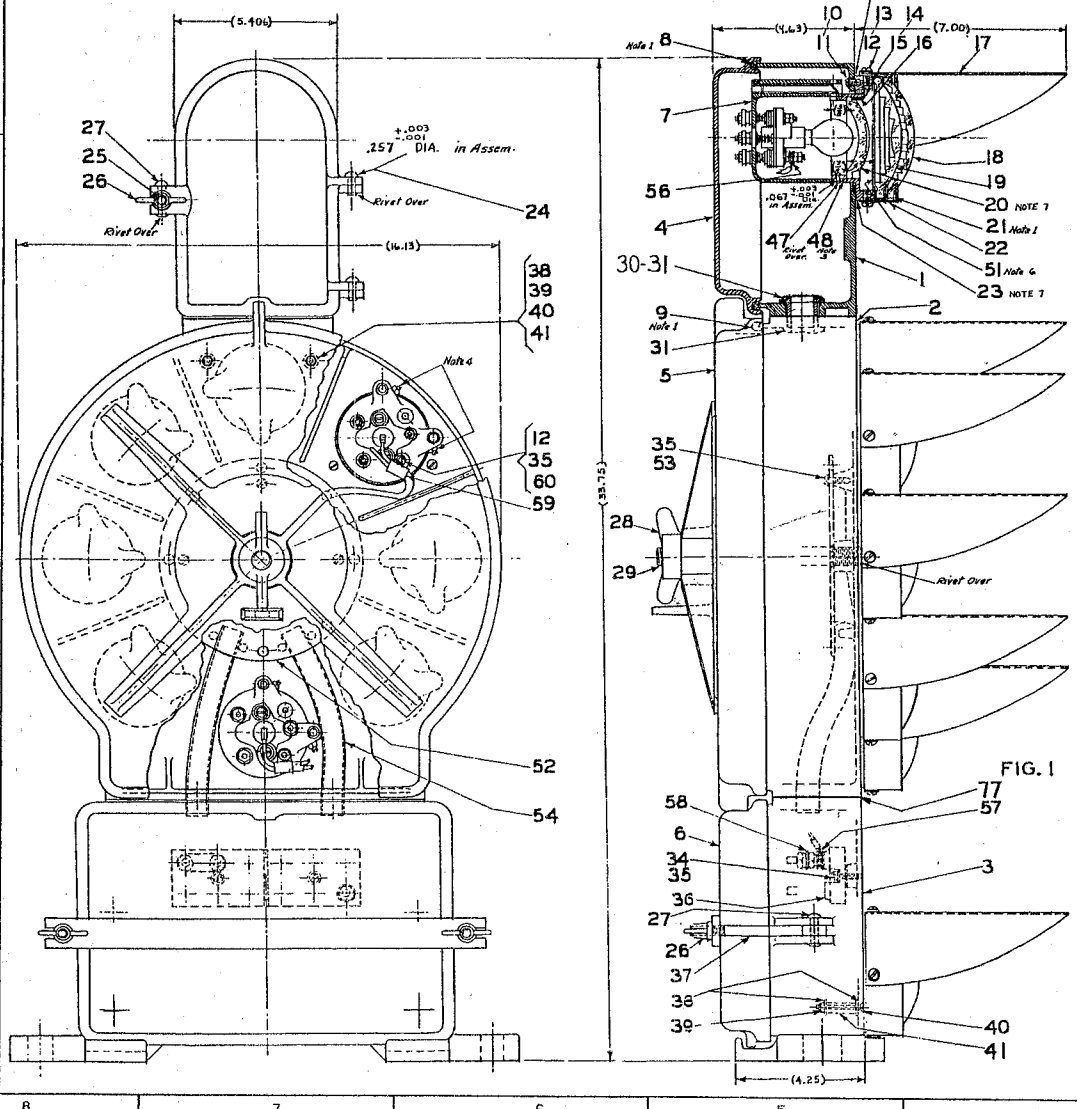
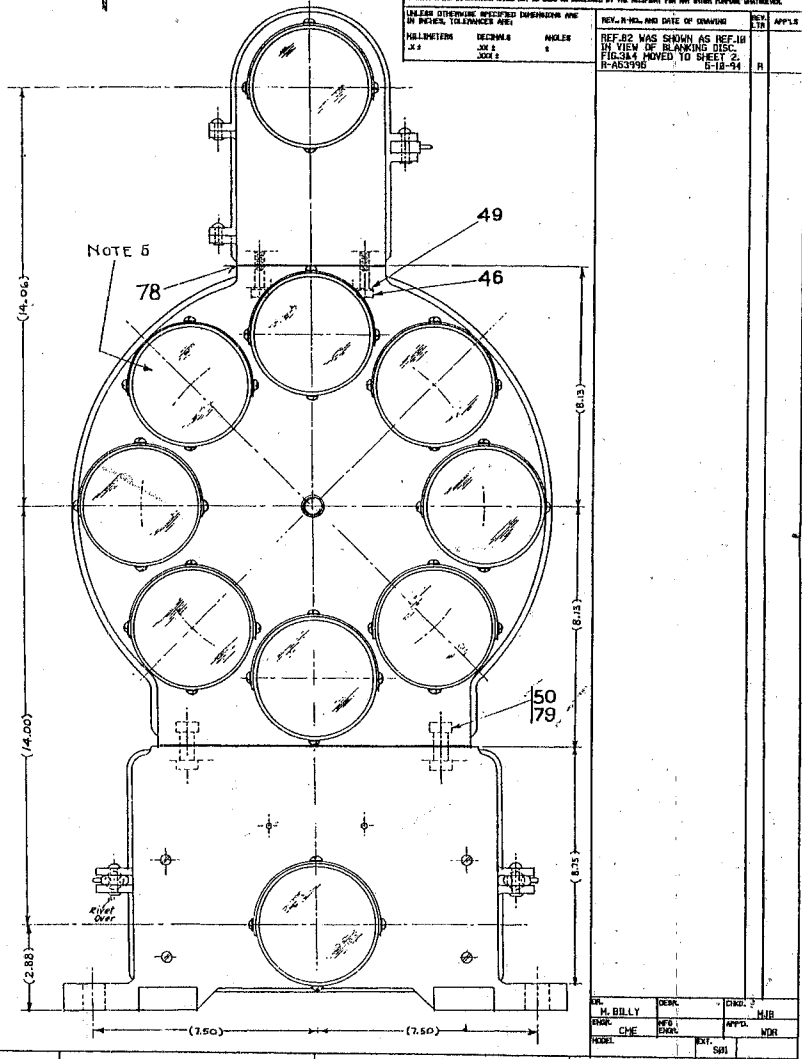
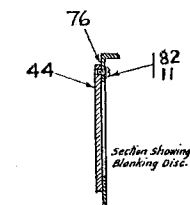
TYPE: SIGNAL COMP. NO. 54360-003-00
 ORG: S.I.C.H.A.L., V.A., C.L., D.V.A.B.F.
 DATE: 10/26/73
 BY: [Signature]

SUPERSEDES 04368-3 SH1 REV. D DATED 10-26-73
 NOTICE OF EXPERIMENTAL REVISIONS: INFORMATION CONTAINED HEREIN IS CONFIDENTIAL AND IS THE PROPERTY OF THE SIGNAL DIVISION, NEW YORK OFFICE. NO COPY SHALL BE MADE OR REPRODUCED WITHOUT THE WRITTEN PERMISSION OF THE SIGNAL DIVISION, NEW YORK OFFICE. THIS INFORMATION IS TO BE USED ONLY FOR THE PURPOSES OF INSPECTION, INVESTIGATION OR REPAIRS. IT IS TO BE DESTROYED BY A REPAIRMAN IF IT IS NOT USED BY THE REPAIRMAN FOR THE PURPOSES OF INSPECTION, INVESTIGATION OR REPAIRS. THE INFORMATION WILL NOT BE USED OR REPRODUCED BY ANY OTHER PERSON OR ORGANIZATION.

REV.	NO.	DATE	BY	APPROV.
1	1	JUN 2 1973	M. BILLY	M.B.R.
2	1	JUL 1 1973	CHE	M.B.R.

REF. 82 WAS SHOWN AS REF. 10 IN VIEW OF BLANKING DISC FIG. 8A MOVED TO SHEET 2. R-AS3796 5-18-74

3 INCH
 0 10 20 30 40 50 60 70 80 90



DESIGNER	CHKD.	APP'D.	DATE
M. BILLY	CHE	M.B.R.	10/26/73
CHE	CHE	M.B.R.	10/26/73

GRS GENERAL RAILWAY SIGNAL ROCHESTER NEW YORK	
SHEET 2	
WORK SIGNAL COMP.	NO. 54360-003-00
DESIGNER S. I. G. N. A. L. V. A. C. L. D. W. A. R. F.	DATE
BY	DATE
SUPERSEDES 54360-3 SHZ REV. D DATED 10-25-93	
NOTICE OF CONFIDENTIAL INFORMATION INFORMATION CONTAINED HEREIN IS CONFIDENTIAL AND IS THE PROPERTY OF THE SIGNAL SIGNALING COMPANY. WORK FURNISHED HEREIN IS PROVIDED TO THE BUYER UNDER THE PROVISIONS OF A CONTRACT FOR THE PURCHASE OF SIGNALING EQUIPMENT. THIS DOCUMENT IS A CONTRACT DOCUMENT AND IS NOT TO BE REPRODUCED OR TRANSMITTED IN ANY FORM OR BY ANY MEANS, ELECTRONIC OR MECHANICAL, INCLUDING PHOTOCOPYING, RECORDING, OR BY ANY INFORMATION STORAGE AND RETRIEVAL SYSTEM, WITHOUT THE WRITTEN PERMISSION OF SIGNAL SIGNALING COMPANY.	
UNLESS OTHERWISE SPECIFIED DIMENSIONS ARE IN INCHES. TOLERANCES ARE:	REV. NO., DATE OF CHANGE, REV. BY, APP'D.
FRACTIONAL DECIMAL ANGLES	FIGURES 3 AND 4 WERE SHOWN UPDATED.
1/16" .003	FORM UPDATED.
1/32" .001	REV. DATE
1/64" .0005	5-18-94
1/128" .0002	

FIG. 2
WITHOUT TOP MARKER LIGHT
(OTHERWISE SAME AS FIG. 1)

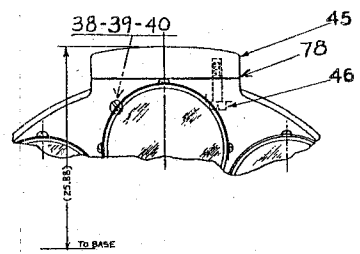


FIG. 3
With 2 Top marker Lights
Otherwise same as Fig. 1

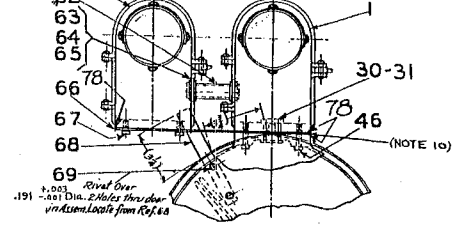


FIG. 4
With 2 Top marker Lights
Otherwise same as Fig. 1

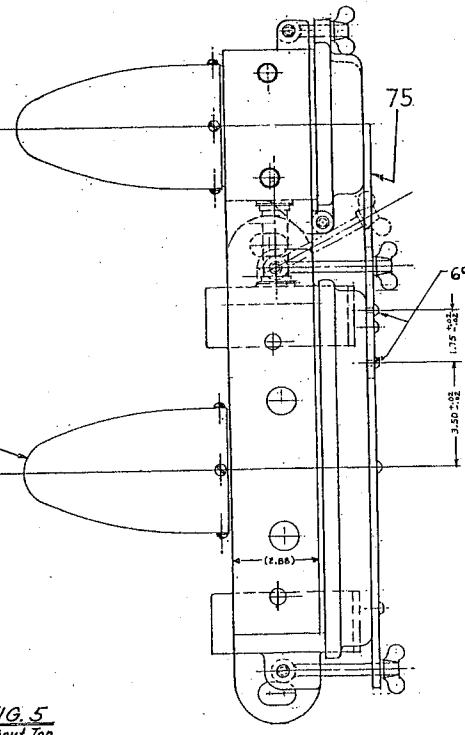
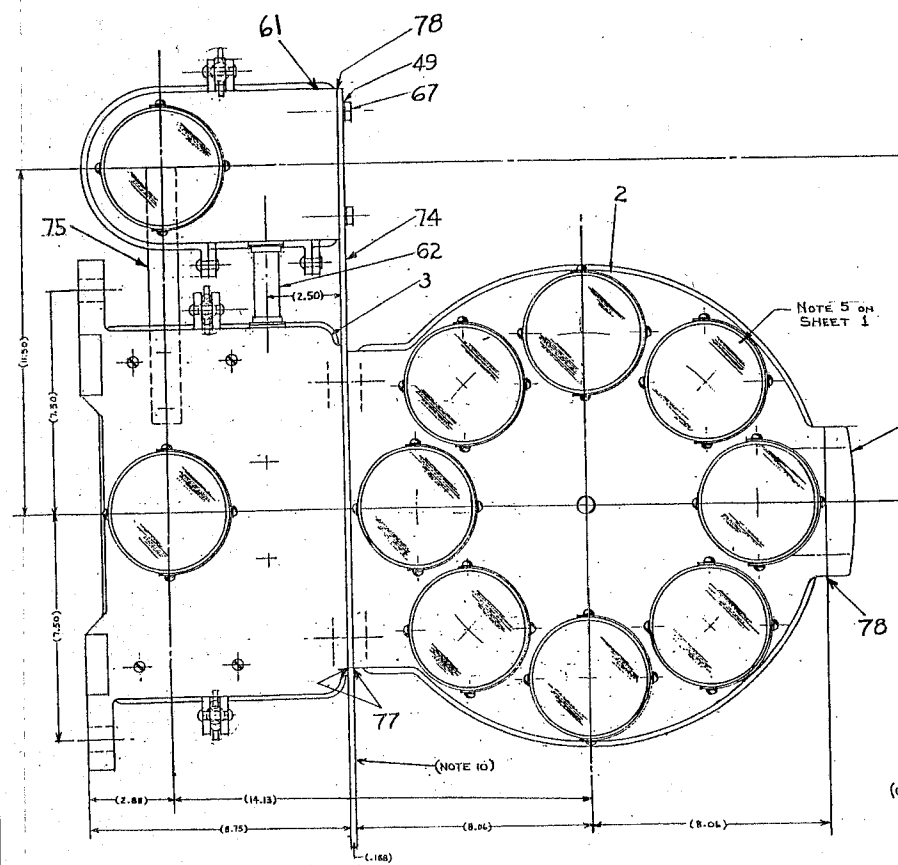
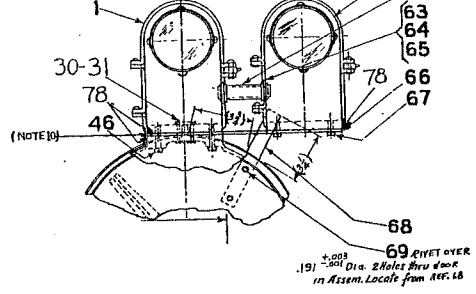


FIG. 5
Without Top
Marker Light
(OTHERWISE SAME AS FIG. 1, 2)

TOP VIEW WITH
SIGNAL HEAD REMOVED

DESIGNED BY H. BILLY	DESIGNED BY DEAR	CHECKED BY HUR
DRAWN BY CHE	INSP. BY MOR	APP'D. BY MOR
MODEL	EXT. SHZ	

2.22.34
 3 INCH
 0 10 20 30 40 50 60 70 80 90 100

DRAWING NUMBER	FIG	1	2	3	4	5	6	7	8	9	10	11	12	13	14
54368-003-01	1	G	Y	R	L	W	G	Y	R	L	W	C	C	C	C
-02	1	G	Y	R	X	G	Y	R	X	C	C	C	C	C	C
-03	2	X	Y	R	L	X	Y	R	L	C	C	C	C	C	C
-04	2	X	Y	R	L	X	Y	R	L	C	C	C	C	C	C
-05	2	G	Y	R	L	G	Y	R	L	C	C	C	C	C	C
-06	2	X	Y	R	X	G	Y	R	X	C	C	C	C	C	C
-07	2	G	Y	R	X	G	Y	R	X	C	C	C	C	C	C
-08	2	G	Y	R	L	G	Y	R	L	C	C	C	C	C	C
-09	2	G	Y	R	X	G	Y	R	X	C	C	C	C	C	C
54368-003-10	1	G	Y	R	L	G	Y	R	L	C	C	C	C	C	C
-11	1	X	Y	R	L	X	Y	R	L	C	C	C	C	C	C
-12	2	X	Y	R	X	X	Y	R	X	C	C	C	C	C	C
-13	2	G	Y	X	L	W	G	Y	X	L	W	C	C	C	C
-14	2	X	Y	R	L	X	Y	R	L	C	C	C	C	C	C
-15	1	X	Y	R	L	X	Y	R	L	C	C	C	C	C	C
-16	1	X	X	R	L	X	X	R	L	C	C	C	C	C	C
-17	2	G	Y	R	L	G	Y	R	L	C	C	C	C	C	C
-18	2	X	X	R	L	X	X	R	L	C	C	C	C	C	C
-19	1	X	X	R	L	X	X	R	L	C	C	C	C	C	C
54368-003-20	3	G	Y	R	L	G	Y	R	L	C	C	C	C	C	C
-21	1	X	Y	R	X	X	Y	R	X	C	C	C	C	C	C
-22	2	G	X	R	X	G	X	R	X	C	C	C	C	C	C
-23	1	G	X	R	X	G	X	R	X	C	C	C	C	C	C
-24	4	G	Y	R	L	G	Y	R	L	C	C	C	C	C	C
-25	1	G	Y	R	X	G	Y	R	X	C	C	C	C	C	C
-26	1,5	G	Y	R	X	G	Y	R	X	C	C	C	C	C	C
-27	1,5	G	Y	R	X	G	Y	R	X	C	C	C	C	C	C
-28	6	G	Y	R	L	G	Y	R	L	C	C	C	C	C	C
-29	4	G	Y	R	L	G	Y	R	L	C	C	C	C	C	C
54368-003-30	3	G	Y	R	X	G	Y	R	X	C	C	C	C	C	C
-31	3	G	Y	R	L	G	Y	R	L	C	C	C	C	C	C
-32	2	X	Y	R	X	X	Y	R	X	C	C	C	C	C	C
-33	1	X	Y	R	X	X	Y	R	X	C	C	C	C	C	C
-34	1	G	X	R	L	G	X	R	L	C	C	C	C	C	C

DRAWING NUMBER	FIG	1	2	3	4	5	6	7	8	9	10	11	12	13	14
-35	1	G	Y	X	L	G	Y	X	L	C	C	C	C	C	C
-36	1	G	X	R	L	G	X	R	L	C	C	C	C	C	C
-37	3,5	G	Y	R	X	G	Y	R	X	C	C	C	C	C	C
-38	6	G	Y	R	X	G	Y	R	X	C	C	C	C	C	C
-39	6	G	Y	R	X	G	Y	R	X	C	C	C	C	C	C
54368-003-41	3,5	G	Y	R	L	G	Y	R	L	C	C	C	C	C	C
-42	1,5	G	Y	R	L	G	Y	R	L	C	C	C	C	C	C
-43	2	X	Y	X	L	X	Y	X	L	C	C	C	C	C	C
-44	3	G	Y	R	X	G	Y	R	X	C	C	C	C	C	C
-46	4	G	Y	R	X	G	Y	R	X	C	C	C	C	C	C
-47	2	X	X	R	L	X	X	R	L	C	C	C	C	C	C
-48	6	X	Y	R	L	X	Y	R	L	C	C	C	C	C	C
54368-003-51	1,5,7	G	Y	R	L	G	Y	R	L	C	C	C	C	C	C
-52	1,2,8	X	Y	X	X	X	Y	X	X	C	C	C	C	C	C
-53	1,2,9	G	X	X	X	G	X	X	X	C	C	C	C	C	C
-54	1,2,9	G	X	X	X	G	X	X	X	C	C	C	C	C	C
-55	1,2,9	G	X	X	X	G	X	X	X	C	C	C	C	C	C
-56	1,2,8	G	Y	X	X	G	Y	X	X	C	C	C	C	C	C
-57	1,2,8	G	Y	X	X	G	Y	X	X	C	C	C	C	C	C
-58	1,2,9	X	Y	X	X	X	Y	X	X	C	C	C	C	C	C
-59	6	G	Y	R	X	G	Y	R	X	C	C	C	C	C	C
54368-003-60	1,5,6	G	Y	R	L	G	Y	R	L	C	C	C	C	C	C
-61	3	G	L	R	X	G	L	R	X	C	C	C	C	C	C
-62	8	G	Y	R	X	G	Y	R	X	C	C	C	C	C	C
-63	4	G	Y	R	X	G	Y	R	X	C	C	C	C	C	C
-64	1,5,6	G	Y	R	L	G	Y	R	L	C	C	C	C	C	C
-65	1,4	-	Y	R	-	Y	R	-	-	L	W	Y	-	-	-
-66	2,6	G	Y	R	-	G	Y	R	-	-	L	W	Y	-	-
-67	6	G	Y	R	L	G	Y	R	L	C	C	C	C	C	C

LEGEND
 G = GREEN
 Y = YELLOW
 R = RED
 L = LUNAR WHITE
 C = CLEAR
 X = BLANK
 - = NO UNIT

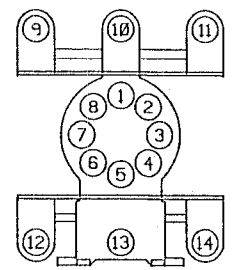


FIG. 9
 SCHEMATIC FRONT VIEW
 SHOWING COLOR LIGHTS NUMBERING SYSTEM

GRS GENERAL RAILWAY SIGNAL
 ROCHESTER NEW YORK

SHEET 3
 SIGNAL COMP. 54368-003-00
 SIGNAL, V.A. C.L. D.V.A.H.F.
 SUPPLIES 54368-3 SL4 & SL5 NEVA DATED 7-29-93
 DATE OF ORIGINAL REVISION: 10-25-94

REV.	DATE	BY	CHKD.	APPROV.
1	10-25-94			

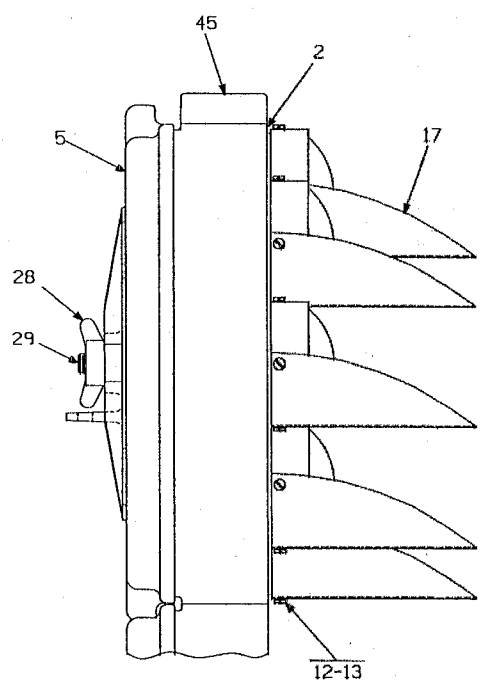
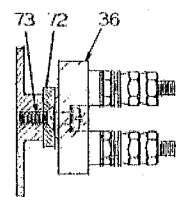
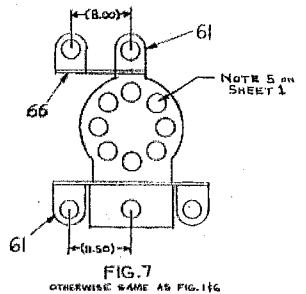
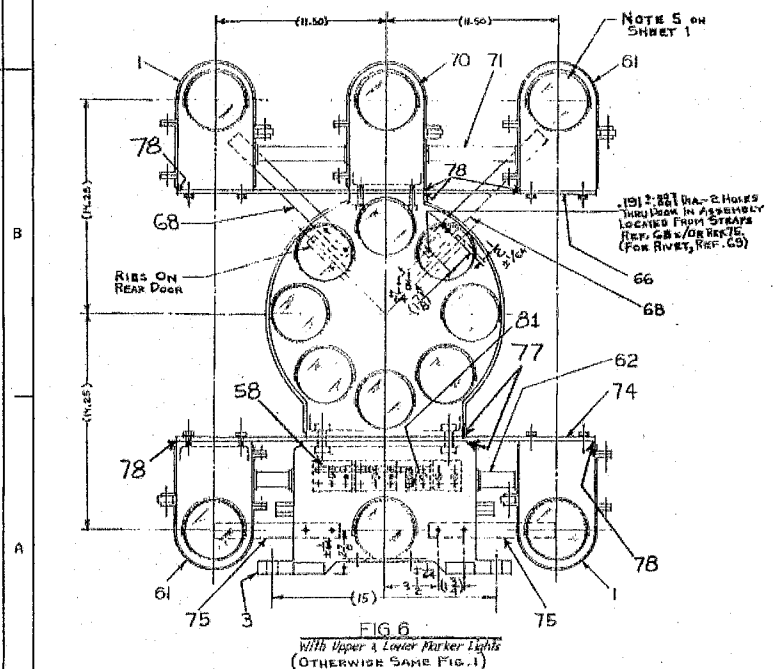
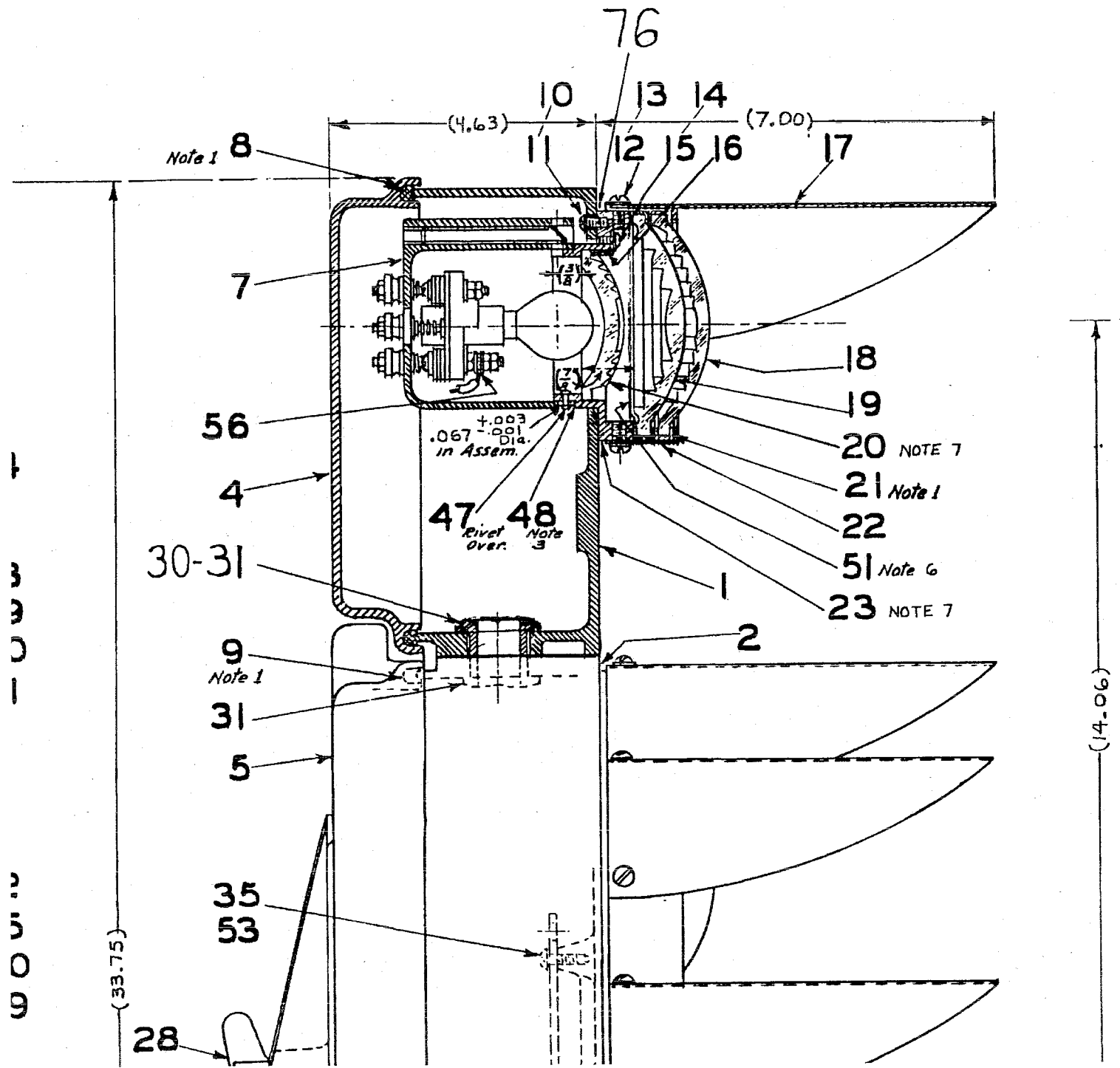


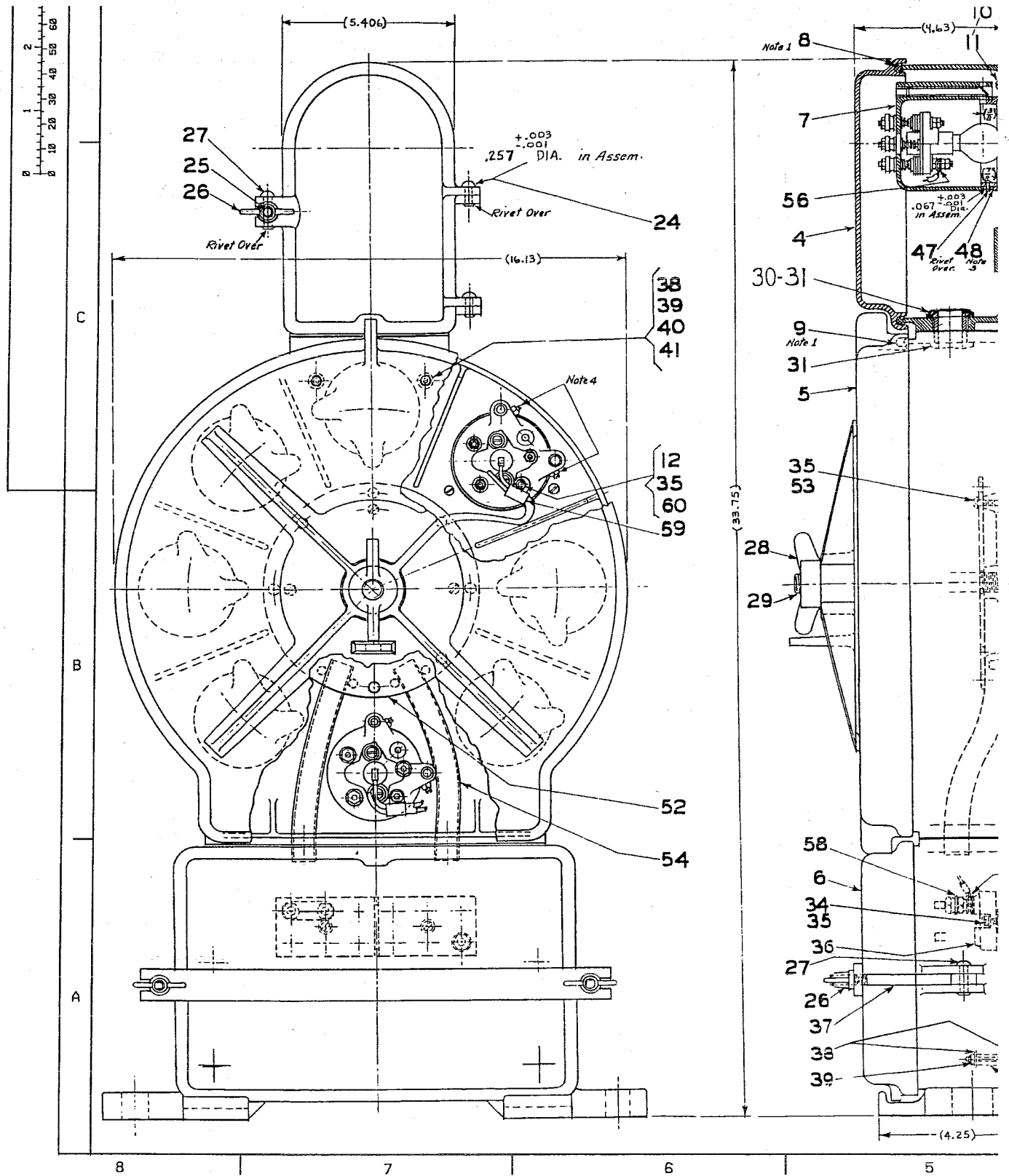
FIG. 8
 OTHERWISE SAME AS FIG. 1 & 2
 (NOTE: UNIT IS MOUNTED 180° FROM VIEW SHOWN)

DESIGNED BY	CHKD.	APP.	DATE
DRAWN BY	APP.	DATE	
REV.	BY	DATE	

NOTE 9:- INSTALLATION OF MARKER LIGHTS IN FIELD REQUIRES A .875 DIAMETER HOLE IN CASE (REF.1) OR IN BASE (REF.3) FOR INSTALLING CONDUIT (REF.62 & 71).

NOTE 10:- CHECK ROUTING ON REMOVAL OF ONE SIDE OF PLATE.





-31	3	G	Y	R	LW	G	Y	R	LW	C	C	-	-	X	-
-32	2	X	Y	R	X	X	Y	R	X	-	-	-	-	X	-
-33	1	X	Y	R	X	X	Y	R	X	-	C	-	-	X	-
-34	1	G	X	R	LW	G	X	R	LW	-	C	-	-	X	-

-65	1,4	-	Y	R	-	-	Y	R	-	-	LW	Y	-	LW	-
-66	2,6	G	Y	R	-	G	Y	R	-	-	-	LW	LW	Y	-
-67	6	G	Y	R	LW	G	Y	R	LW	-	C	-	-	C	Y

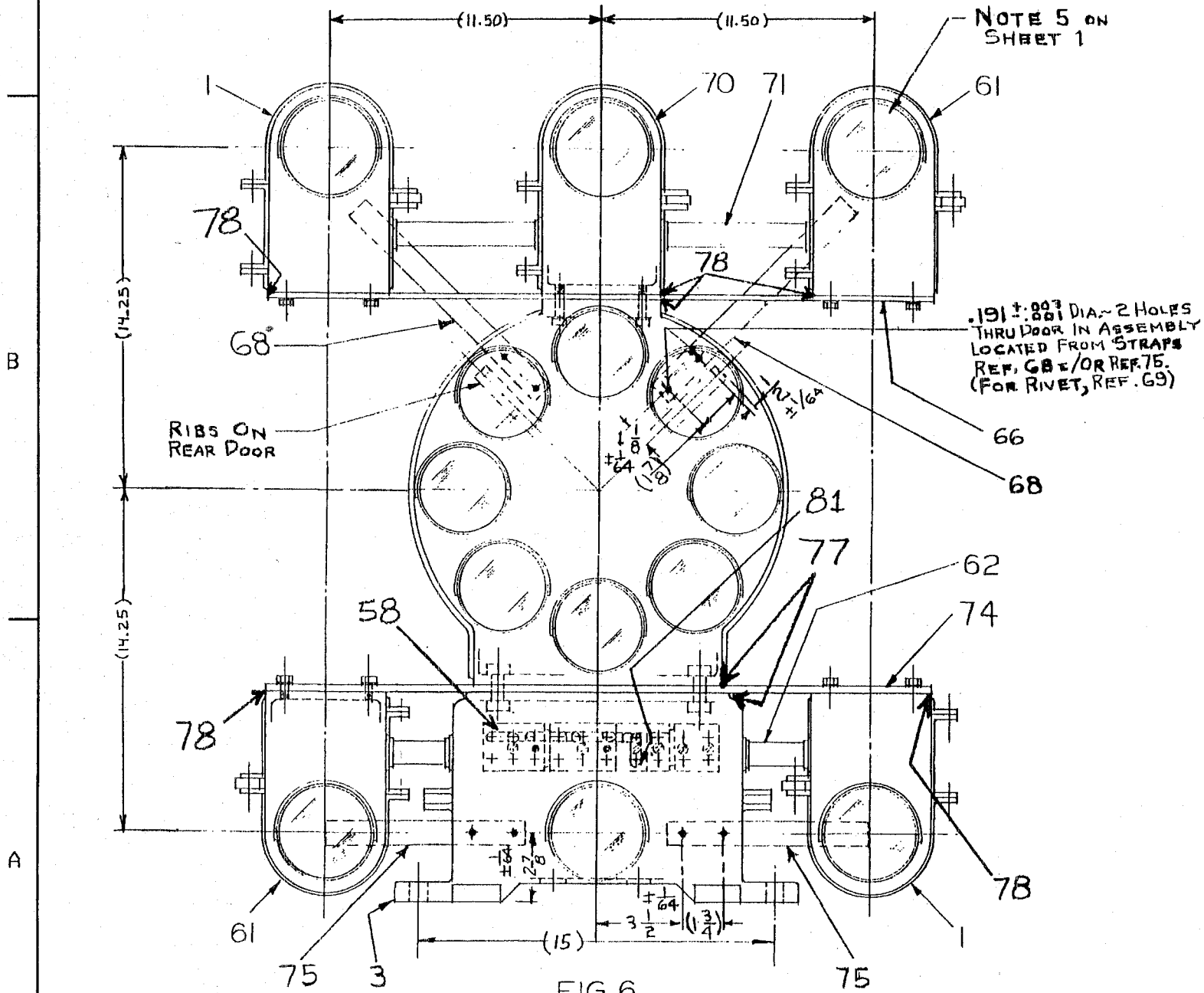


FIG. 6
With Upper & Lower Marker Lights
(OTHERWISE SAME FIG. 1)

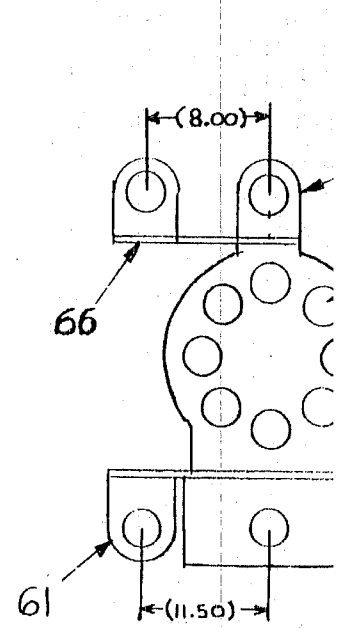
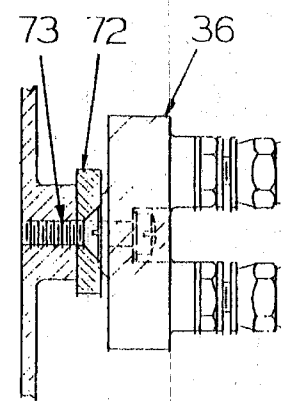


FIG. 7
OTHERWISE SAME A



B

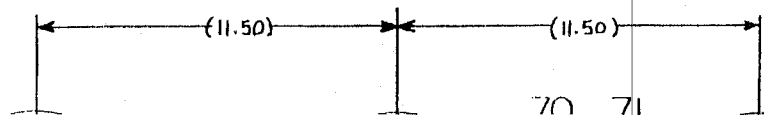
A

NOTE 5 ON SHEET 1

RIBS ON REAR DOOR

DRAWING NUMBER	FIG	COLOR LIGHT ARRANGEMENT CHART													
		1	2	3	4	5	6	7	8	9	10	11	12	13	14
54360-003-01	1	G	Y	R	LW	G	Y	R	LW	-	C	-	-	C	-
-02	1	G	Y	R	X	G	Y	R	X	-	C	-	-	X	-
-03	2	X	Y	R	LW	X	Y	R	LW	-	-	-	-	X	-
-04	2	X	X	R	LW	X	X	R	LW	-	-	-	-	X	-
-05	2	G	Y	R	LW	G	Y	R	LW	-	-	-	-	X	-
-06	2	X	Y	R	X	X	Y	R	X	-	-	-	-	C	-
-07	2	G	Y	R	X	G	Y	R	X	-	-	-	-	X	-
-08	2	G	Y	R	LW	G	Y	R	LW	-	-	-	-	C	-
-09	2	G	Y	R	X	G	Y	R	X	-	-	-	-	C	-
54360-003-10	1	G	Y	R	LW	G	Y	R	LW	-	C	-	-	X	-
-11	1	X	Y	R	LW	X	Y	R	LW	-	C	-	-	C	-
-12	2	X	X	R	X	X	X	R	X	-	-	-	-	X	-
-13	2	G	Y	X	LW	G	Y	X	LW	-	-	-	-	X	-
-14	2	X	Y	R	LW	X	Y	R	LW	-	-	-	-	C	-
-15	1	X	Y	R	LW	X	Y	R	LW	-	C	-	-	X	-
-16	1	X	X	R	LW	X	X	R	LW	-	C	-	-	C	-
-17	2	G	X	R	LW	G	X	R	LW	-	-	-	-	X	-
-18	2	X	X	R	LW	X	X	R	LW	-	-	-	-	C	-
-19	1	X	X	R	LW	X	X	R	LW	-	C	-	-	X	-
54360-003-20	3	G	Y	R	LW	G	Y	R	LW	C	C	-	-	C	-
-21	1	X	Y	R	X	X	Y	R	X	-	C	-	-	C	-
-22	2	G	X	R	X	G	X	R	X	-	-	-	-	X	-
-23	1	G	X	R	X	G	X	R	X	-	C	-	-	X	-
-24	4	G	Y	R	LW	G	Y	R	LW	-	C	Y	-	X	-
-25	1	G	Y	R	X	G	Y	R	X	-	C	-	-	C	-
-26	1,5	G	Y	R	X	G	Y	R	X	-	-	-	-	C	C
-27	1,5	G	Y	R	X	G	Y	R	X	-	C	-	-	C	C
-28	6	G	Y	R	LW	G	Y	R	LW	C	C	Y	C	C	Y
-29	4	G	Y	R	LW	G	Y	R	LW	-	C	Y	-	C	-
54360-003-30	3	G	Y	R	X	G	Y	R	X	C	C	-	-	X	-
-31	3	G	Y	R	LW	G	Y	R	LW	C	C	-	-	X	-
-32	2	X	Y	R	X	X	Y	R	X	-	-	-	-	X	-
-33	1	X	Y	R	X	X	Y	R	X	-	C	-	-	X	-
-34	1	G	X	R	LW	G	X	R	LW	-	C	-	-	X	-

DRAWING NUMBER	FIG	COLOR LIGHT ARRANGEMENT CHART													
		1	2	3	4	5	6	7	8	9	10	11	12	13	14
-35	1	G	Y	X	LW	G	Y	X	LW	-	C	-	-	C	-
-36	1	G	X	R	LW	G	X	R	LW	-	C	-	-	C	-
-37	3,5	G	Y	R	X	G	Y	R	X	C	C	-	-	C	C
-38	6	G	Y	R	X	G	Y	R	X	C	C	Y	-	C	Y
-39	6	G	Y	R	X	G	Y	R	X	-	C	-	-	C	Y
54360-003-41	3,5	G	Y	R	LW	G	Y	R	LW	C	C	-	-	C	C
-42	1,5	G	Y	R	LW	G	Y	R	LW	-	C	-	-	C	C
-43	2	X	Y	X	LW	X	Y	X	LW	-	-	-	-	X	-
-44	3	G	Y	R	X	G	Y	R	X	C	C	-	-	C	-
-46	4	G	Y	R	X	G	Y	R	X	-	C	Y	-	X	-
-47	2	X	X	X	LW	X	X	X	LW	-	-	-	-	C	-
-48	5	X	Y	R	LW	X	Y	R	LW	-	-	-	-	C	C
54360-003-51	1,6,7	G	Y	R	LW	G	Y	R	LW	C	C	-	-	C	Y
-52	1,2,8	X	Y	X	X	X	Y	X	X	-	-	-	-	X	-
-53	1,2,8	G	X	X	X	G	X	X	X	-	-	-	-	X	-
-54	1,2,8	G	X	X	Y	G	X	X	Y	-	-	-	-	X	-
-55	1,2,8	G	Y	X	X	G	Y	X	X	-	-	-	-	X	-
-56	1,2,8	X	X	X	Y	X	X	X	Y	-	-	-	-	X	-
-57	1,2,8	G	Y	X	Y	G	Y	X	Y	-	-	-	-	X	-
-58	1,2,8	X	Y	X	Y	X	Y	X	Y	-	-	-	-	X	-
-59	6	G	Y	R	X	G	Y	R	X	C	C	Y	-	X	-
54360-003-60	1,5,6	G	Y	R	LW	G	Y	R	LW	-	-	-	-	C	Y
-61	3	G	LW	R	X	G	LW	R	X	C	C	-	-	X	-
-62	6	G	Y	R	X	G	Y	R	X	C	C	Y	-	C	-
-63	4	G	Y	R	X	G	Y	R	X	-	C	Y	-	C	-
-64	1,5,6	G	Y	R	LW	G	Y	R	LW	-	-	-	-	C	Y
-65	1,4	-	Y	R	-	-	Y	R	-	-	LW	Y	-	LW	-
-66	2,6	G	Y	R	-	G	Y	R	-	-	-	-	-	LW	LW
-67	6	G	Y	R	LW	G	Y	R	LW	-	C	-	-	C	Y



NOTE 5 ON SHEET 1

61

4 0 0 0 0

D

D

NOTE 1:- ASSEMBLE GASKETS (REF.8,9 & 21) AS PER SPEC. 9K-8.

NOTE 3:- GUIDE (REF.48) TO BE ASSEMBLED AFTER RECEPTACLE UNIT (REF.7) HAS BEEN ATTACHED. LOCATE WALL OF RING (REF.23) USING GUIDE TEMPLATE. RIVET AS SHOWN.

NOTE 4:- TEST PER TS54360-003-01.

NOTE 5:- SEE SHEET 4 FOR SCHEMATIC FRONT VIEW (FIG.9) SHOWING COLOR LIGHTS NUMBERING SYSTEM.

NOTE 6:- LENS (REF.51) IS USED IN TOP AND BOTTOM MARKER LIGHTS ONLY. (WHERE CLEAR LENS 56901-005-00 IS CALLED FOR) TO BE ASSEMBLED BETWEEN REF.19 & 23.

there is no sheet 4 - is on sheet 3

← (5.406) →

NOTE 7:- APPLY THREE BEADS OF SEALING COMPOUND PER 90B0010, AT EQUIDISTANT POINTS BETWEEN LENS (REF.20) AND RING (REF.23).

~~NOTE 8:- ALL DIMENSION DIMENSIONS ARE REFERENCE DIMENSIONS~~

NOTE 9:- INSTALLATION OF MARKER LIGHTS IN FIELD REQUIRES A .875 DIAMETER HOLE IN CASE (REF.1) OR IN BASE (REF.3) FOR INSTALLING CONDUIT (REF.62 & 71).

NOTE 10:- CHECK ROUTING ON REMOVAL OF ONE SIDE OF PLATE.

76
10 13 14

6-14-95



1.0 PURPOSE

This procedure should be used in the test and adjustment of all types of VA signals.

2. EQUIPMENT REQUIRED FOR TEST AND ADJUSTMENT

- A. 10VDC, 2A power supply or equivalent (battery)
- B. Flat surface or fixture, 20" above ground level for signal mounting.
- C. VA signal target board set up 25 ft. away. See Figure 1.
- D. Circuits and wiring diagrams for particular signal to be tested.

3.0 FOCUSING AND ADJUSTMENT

- A. Mount signal head to the 20" above ground level, flat surface such that the light beams will be perpendicular to the target board and in line with the appropriate targets. Signal head itself should be 25 ft. away from the target board.
- B. Referring to the terminal block on the appropriate wiring diagram for the signal under test, connect the power leads such that the lamp in the lens unit to be adjusted is lit. Note: All lamps use the 10 volt supply previously called out.
- C. Insure that the lens unit is locked in position by checking that the knurled nut is turned down tight against the boss on the holder casting. Adjust the three lamp receptacle lock nuts until the beam pattern from the unit is lined up (left to right) on the target corresponding to the lens unit being adjusted. A sharp vertically elongated beam pattern should be visible with its brightest region centered on the appropriate target.
- D. When proper focus and alignment are reached, remove the lens unit by unscrewing the knurled nut to the peened over end of the stud. Press the knurled nut and rotate counterclockwise to disengage the latch, the lens unit may then be removed. The lamp should still be lit.
- E. Place a sighting device (51120-4 Gr. 1) in the appropriate hole in the receptacle unit casting. Assemble the locking ball and set screw parts (dwg. 56895, ref. 14, 7, and 8 respectively) into the threaded hole which adjoins the sighting device cavity. Do not tighten these! Adjust the position of the sighting device with a paperclip or other custom adjustment tool to produce the following indications:

NOTICE OF CONFIDENTIAL INFORMATION Information contained herein is confidential and is the property of the General Railway Signal Company Where furnished with a proposal the recipient shall use it solely to evaluate the proposal Where furnished to a customer it shall be used solely for purposes of inspection, installation or maintenance Where furnished to a supplier it shall be used solely in the performance of the contract The information shall not be used or disclosed by the recipient for any other purpose whatsoever

FORM 936-B

DATE	REV	REV	REV	REV	REV	REV	REV
6-14-95							
R NO	A42170	A					
CH'K'D	TM 5/2 LA						
APP'D	CGS 7/1/85						

TS54360-3 Gr.1

SHEET 2

6-14-85

-Sighting device with lamp terminals:

Adjust position of sighting device until an image of the side view of the lamp filament appears in the sighting device. This image should appear as a straight line and be centered on the sighting device crosshairs. See Figure 2.

-Sighting device perpendicular to lamp terminals:

Adjust position of sighting device until an image of the front view of the lamp filament appears in the sighting device. This image should appear as an inverted "V" shape and be centered on the sighting device crosshairs. See Figure 2.

While holding the sighting device in its adjusted position, lightly tighten the set screw (ref. 7) against the ball (ref. 14) being careful not to distort the sighting device cylinder. Lock the set screw in place by tightening the lock nut (ref. 8). Recheck the image in the sighting device to make sure that it is still visible and centered. If not, loosen the lock nut/set screw and readjust the sighting device.

- F. After **both** sighting devices have been adjusted and locked in place, replace the lens unit back into the signal using the opposite procedure to that found in part D. Check that the beam alignment is unchanged and is still correct. If not, readjust.
- G. Perform steps A-F on all lens units in the signal head. When all lens units in the signal head are completed the testing and adjustment for that unit is done.

REV



TEST SPECIFICATIONS

TS54360-3 Gr. 1

SH.3

6-14-85

6-14-

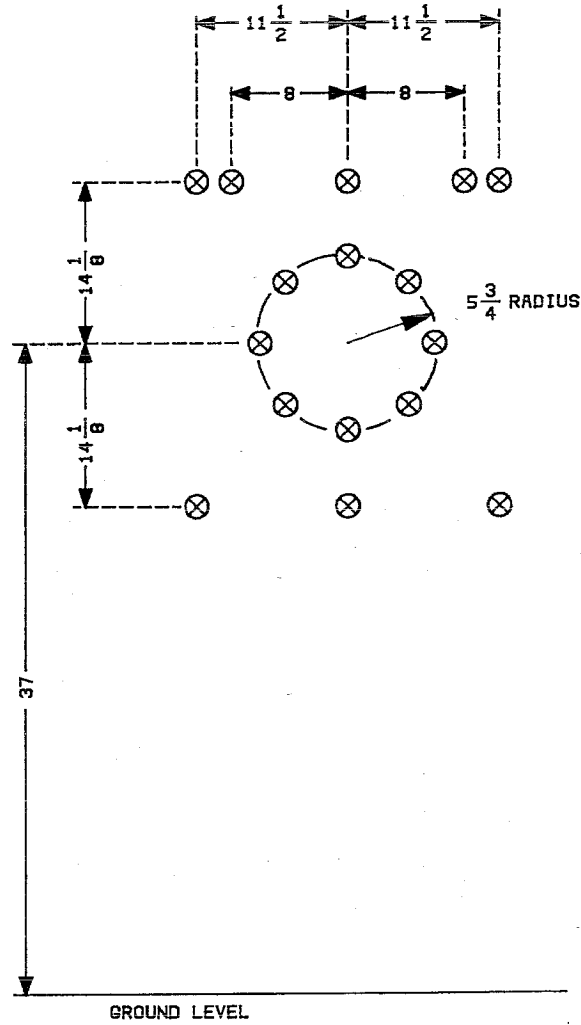


FIG.1
VA SIGNAL TARGET

F4284A



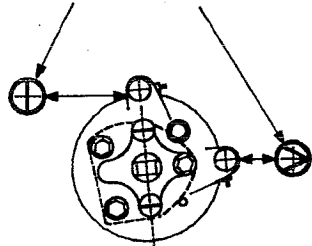
TEST SPECIFICATIONS

TS54360-3Gr.1

SH.4

6-14-85

ENLARGE VIEWS OF
IMAGES SEEN IN
SIGHTING DEVICES



LAMP TERMINAL
CENTER LINE

FIG.2

SIGNAL COMPLETE

54360-003-28

|S||G|N|A|L||V|A||C|L||D|W|A|R|F||

PER FIG. A-4-9 (B&O DWG) FILE 190R-1

TEST PER SPEC: TS54630-003-001

4

54360-003-00 (FIG. 6)

54360-3 GR. 28, REV. A, DTD. 1-16-57

*here are some
prices of parts*

COLOR POSITION LIGHT DWARF SIGNAL WITH 4 INCH DOUBLET LENS

UNIT WITH FOCUS FINDERS.

*(note - prices do not
include freight)*

2	53071-033-00	1	Case (Marker Light)	282.14
1	53071-026-00	2	Case (Signal Head)	445.19
1	53071-049-00	3	Case (Lower)	763.65
5	36727-053-00	4	Door (Marker Light)	557.60
1	36727-052-00	5	Door (Signal Head)	138.32
1	53057-005-01	6	Door Comp, (Lower)	
14	56895-000-02	7	Receptacle Unit Comp	402.48
9.69	43460-021-00	8	Gasket (Marker Light)	
4.33	43460-021-00	9	Gasket, (Signal Head)	
42	03608-012-ON	10	Screw, .164-32 x .38 Lg Pan Hd	
42	53029-068-00	11	Washer, .164 ID, .340 OD, .023 Thk Shk'prf	
70	03610-112-ON	12	Screw, .190-32 x .38 Lg Pan Hd	
56	01273-004-ON	13	Washer, .190 ID, .334 OD, .047 Thk Lock	
42	03606-008-ON	14	Screw, .138-32 x .25 Lg Pan Hd	
42	53029-067-00	15	Washer, .138 ID, .295 OD, .021 Thk Shk'prf	
42	53721-026-00	16	Clip	
14	49127-051-00	17	Hood	26.52
14	09238-110-00	18	Lens, Rndl	
14	56902-028-00	19	Lens	
2	56901-000-00	20	Lens, Inner Doublet (Green)	

SIGNAL COMPLETE

54360-003-28

3

A42170	B	A43311	C	A45140	D	A45816	E	A53995	F
TMS/RWD		RES/RWD		MC/RWD		TMS/RWD	MJB/CME		
CGS		CGS		CGS		CGS	WDR		
4		56901-001-00			20		Lens, Inner Doublet (Yellow)		
2		56901-002-00			20		Lens, Inner Doublet (Red)		
2		56901-003-00			20		Lens, Inner Doublet (Lunar White)		
4		56901-005-00			20		Lens, Inner Doublet (Clear)		
28		13014-456-00			21		Gasket		
14		56904-000-00			22		Ring, Bezel		
14		43983-071-00			23		Ring Bezel		
10		00791-001-ON			24		Rivet, .250 x .69 Rd Hd		
5		39319-020-00			25		Bolt, .375-16 x 2.00 Lg Eye		
7		10117-000-00			26		Nut, .375-16 Wing		
7		00869-000-ON			27		Rivet, .25 x 1.00 Rd Hd		
1		10118-005-00			28		Nut, .625-11 Wing		
1		00980-059-00			29		Stud, .625 X 6.63 Lg		
1		01299-000-ON			30		Nipple, .75 Close		
2		00826-000-ON			31		Nut, .750-14 T&B Lock .19 Thk		
4		03410-120-ON			34		Screw, .190-32 x .63 Lg Fill Hd		
19		53029-069-00			35		Washer, .190 ID, .381 OD, .025 Thk Shk'prf		
1		46048-023-01			36		Terminal Block Comp, (6 Way)		
1		46048-023-04			36		Terminal Block Comp (4 Way)		
2		39319-033-00			37		Bolt, .375-16, 3.88 Lg Eye		
12		01250-007-ON			38		Washer, .164 ID, .500 OD, .040 Thk Flat		

6-14-85
A42170

1-2-86
B A43311

8-20-87
C A45140

6-1-88
D A45816

5-10-94
E A53995

F

SIGNAL COMPLETE

54360-003-28

6	42333-046-00	39	Nut, .164-32 Elastic Stop ⁴
6	03308-064-ON	40	Screw, .164-32 x 2.00 Lg Flat Hd
6	07350-186-00	41	Bushing
2	02878-003-00	46	Screw, .313-18 x 1.50 Lg Hex Hd
14	00677-000-ON	47	Pin, .063 x .50 Lg Escutcheon
14	32518-002-00	48	Guide
4	53029-076-00	49	Washer, .313 ID, .610 OD, .034 Thk Shk'prf
2	42187-000-00	50	Bolt, .500-13 x 1.50 Lg Sq Hd & Sq Nut
4	48885-002-00	51	Disc, Lens Mtg
1	33714-003-00	52	Disc
3	03610-116-ON	53	Screw, .190-32 x .50 Lg Pan Hd
1.125	82290-000-01	54	Tubing, .500 Plastic (Clear) Per 82P0012
14	59825-149-00	56	Terminal, .164 Post, (#22-18)
28	59825-124-00	57	Terminal, .250 Post, (#22-16)
6	04906-119-00	58	Connector
14	53114-001-00	59	Clip, Wire
14	01272-007-ON	60	Nut, .190-32 Hex, .13 Thk
2	53071-034-00	61	Case, Marker Light
2	46190-030-00	62	Conduit, .500 x 4.25
8	08321-008-00	63	Washer, .890 ID, 1.750 OD, .06 Thk Flat
16	27589-000-00	64	Nut, .500 T&B Lock .16 Thk
8	01333-009-00	65	Washer, .875 ID, 1.375 OD Flat
1	41885-227-00	66	Plate, Support (Upper Markers)

6-14-85
A42170

B 1-2-86
A43311

C 8-20-87
A45140

D 6-1-88
A45816

E 5-10-94
A53995

F

SIGNAL COMPLETE

54360-003-28

8	00441-006-ON	67	Screw, .313-18 x .75 Lg Hex Hd
2	51432-312-00	68	Strap, Locking (Upper Markers)
8	00204-000-ON	69	Rivet, .188 x .50 Lg Rd Hd
1	53071-048-00	70	Case (Marker Light)
2	46190-038-00	71	Conduit, .50 x 7.13 Lg
1	41885-068-00	72	Plate, Terminal Block Support
2	03310-120-ON	73	Screw, .190-32 x .63 Lg Flat Hd
1	41885-066-00	74	Plate, Support (Lower Markers)
2	51432-086-00	75	Strap, Locking (Lower Markers)
14	13014-609-00	76	Gasket
2	13014-610-00	77	Gasket
6	13014-611-00	78	Gasket
2	01273-010-ON	79	Washer, .500 ID, .869 OD, .125 Lock
1	04906-020-00	81	Connector
36	80557-076-01		Wire, #18 Ga Brwon 2 Cond. Type SP-1

(Per 82H0003)

--- 43989-284-00 -- Wiring Diagram

THE FOLLOWING PARTS NOT INCLUDED IN GROUP; MUST BE SPECIFIED

SEPARATELY ON SHIPPING ORDER WHEN REQUIRED..

14 34866 KN 55 Lamp

6-14-85
A42170

1-2-86
B A43311

8-20-87
C A45140

6-1-88
D A45816

5-10-94
E A53995

F